

DETRAFFORD

ST GEORGE'S GARDENS
PHASE 4

EXCLUSIVE APARTMENTS IN THE CITY'S
NEWEST NEIGHBOURHOOD

Welcome to St George's Gardens

LIVING IN HARMONY

St George's Gardens offers an exceptional opportunity to purchase a desirable new apartment in a landmark setting at the heart of Manchester. With unrivalled views over the Grade II listed church from which it derives its name, this stunning development of 46 one bed apartments, 91 two bed apartments and 1 three bed apartment has been carefully designed to blend harmoniously with its historic neighbour.

Built to celebrate the Battle of Waterloo by renowned architect Francis Goodwin, the fine Gothic revival façade will be framed and reflected in the glass of the new development, while the warm grey cladding and texture of the building provide a suitable and seamless architectural nod to the past.





Welcome to St George's Gardens

LIVING IN HARMONY

Inside, the apartments are meticulously designed for today's city living. Bright, open spaces and clean, contemporary lines are designed to meet the expectations of discerning home buyers and investors while fixtures and finishes reflect the prestige of the building. Each apartment will feature its own private winter gardens and a communal roof garden provides attractive outdoor space in a city setting and the opportunity to relax and unwind.

St George's Gardens is part of our exciting new Manchester Gardens master scheme which is transforming the area and providing a desirable new neighbourhood. The nearby waterside attractions and excellent bus, tram and rail links enhance the appeal of this city centre location.

St George's Gardens has not only been designed in harmony with its surroundings, but also features fine quality interiors, living spaces and finishes to fire the enthusiasm of purchasers. It's a winning combination.



138 homes
46 one bed apartments
91 two bed apartments





Castlefield

A THRIVING COMMUNITY
AT THE HEART OF THE CITY

Castlefield is an inner city oasis of quaint cobbled streets, canals and waterside al fresco wining and dining. Britain's first Urban Heritage Park – with its attractive canal basin, open spaces, converted mills, bridges and viaducts – has become one of the city's most sought-after residential areas. It is particularly popular with professionals who combine the undoubted lifestyle benefits with close proximity to the city centre and excellent road and rail access.

With a heritage dating back to Roman times, Castlefield today offers vibrant, modern waterside living, complemented by appealing bars, restaurants, music and entertainment. Among the attractions are the celebrated Castlefield Bowl outdoor arena, The Castlefield Gallery and the popular Museum of Science and Industry.

Castlefield is quite simply a haven at the heart of the city offering a more relaxed pace of life – but you can be sure that, when the bright lights of the city centre beckon, you will always be close at hand.



Castlefield offers vibrant, modern waterside living, complemented by appealing bars, restaurants, music and entertainment.

St George's Gardens is

5 minute stroll to The Bridgewater Canal Basin with its waterside bars, restaurants and market

5 minute walk to Cornbrook Metrolink station and access to the cross city tram network to Manchester Victoria

6 minutes to Manchester Piccadilly by rail from nearby Deansgate station


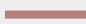
And provides easy access to Manchester's motorway links



ST GEORGE'S GARDENS
PHASE 4

  British Rail
  Metrolink

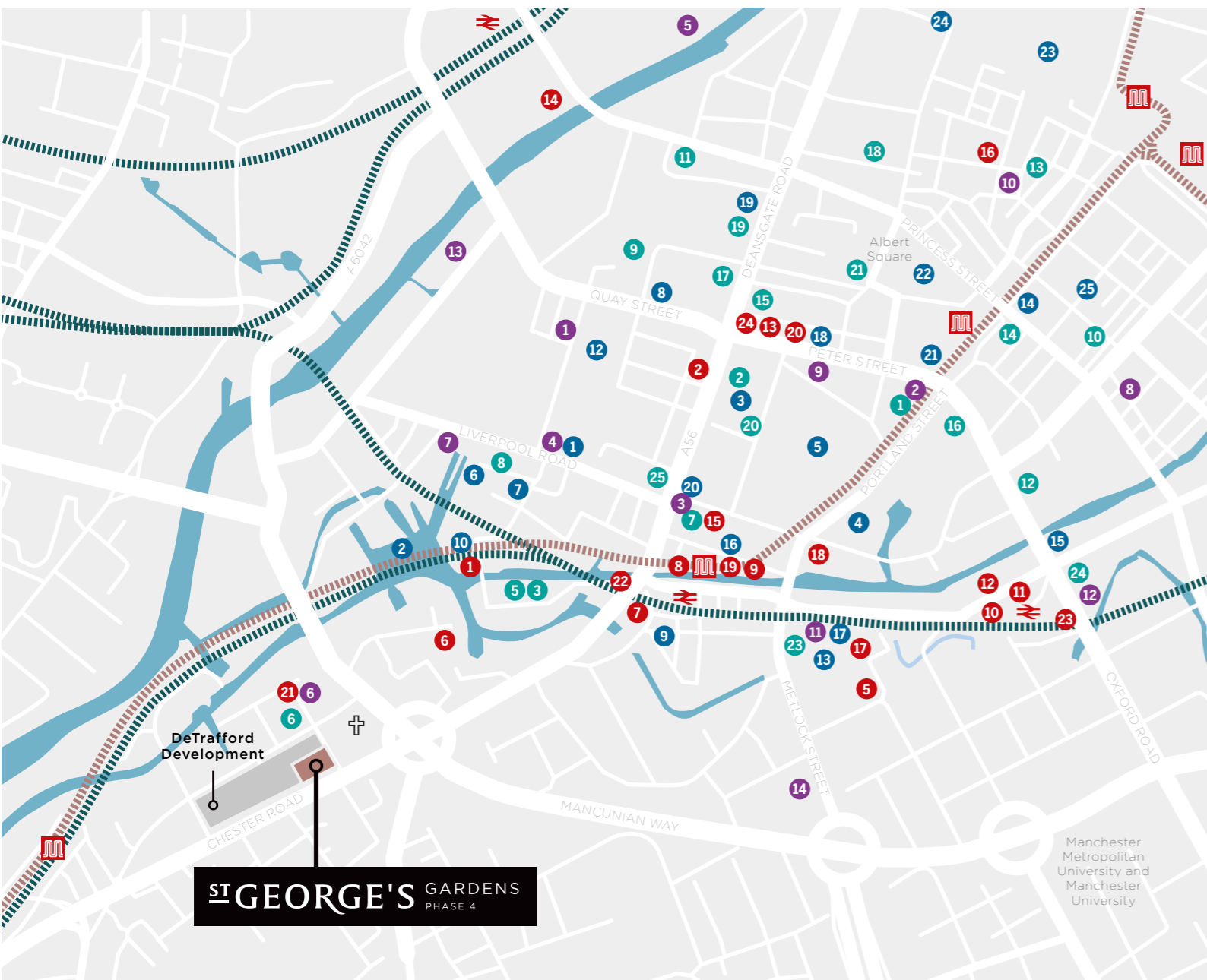
Site Plan

Castlefield Masterplan 
St George's Gardens 



A haven to relax, dine and enjoy

LIVING IN HARMONY



DINING

- 1 The French Restaurant, Midland Hotel
- 2 Almost Famous Burger Bar & Restaurant
- 3 Albert's Shed Restaurant & Bar
- 4 Carluccio's Italian Restaurant
- 5 Dukes 92 Restaurant & Bar
- 6 Banyan Tree Restaurant
- 7 The Hilton Restaurant
- 8 Sapporo Teppanyaki Restaurant
- 9 Tattu Restaurant & Bar
- 10 Try Thai Restaurant
- 11 Manchester House Restaurant
- 12 Giorgio's Restaurant
- 13 Rosso Restaurant & Bar
- 14 Koh Samui Thai Restaurant
- 15 Topkapi Palace Restaurant
- 16 Don Giovanni's Restaurant
- 17 Hawksmoor Restaurant
- 18 El Gato Negro Tapas
- 19 Australasia Restaurant
- 20 James Martin Manchester
- 21 The Albert Square Chop House
- 22 Wing's Restaurant
- 23 Indian Tiffin Room Restaurant
- 24 The Refuge Restaurant & Bar
- 25 Dimitri's Taverna Greek Restaurant & Tapas Bar

BARS

- 1 Barca Bar
- 2 Suede Bar
- 3 Alchemist
- 4 Oast House
- 5 The Laundrette
- 6 The Wharf Pub
- 7 Atlas Bar
- 8 Lock 91 Bar
- 9 Baa Bar Deansgate Bar & Club
- 10 Dog Bowl-Black Dog Ballroom Bar
- 11 Gorilla
- 12 The Ritz
- 13 Revolucion de Cuba
- 14 Menagerie
- 15 Cloud 23 The Hilton Bar
- 16 All Bar One
- 17 The Gas Works Brewbar
- 18 The Britons Protection Pub
- 19 Deansgate Locks
- 20 Albert Schloss
- 21 Binary Bar
- 22 Knott Bar
- 23 Thirsty Scholar
- 24 Dirty Martini

PLACES OF INTEREST/ENTERTAINMENT

- 1 Museum of Science & Industry (MOSI)
- 2 The Giants Basin
- 3 The Great Northern
- 4 The Bridgewater Hall
- 5 Manchester Central Convention Complex (GMEX)
- 6 Castlefield Outdoor Arena
- 7 Roman Fort
- 8 Opera House
- 9 Castlefield Gallery
- 10 Catalan Square
- 11 Albert Square Town Hall
- 12 St John's Gardens
- 13 First Street
- 14 Manchester Art Gallery
- 15 The Palace Theatre
- 16 The Comedy Store
- 17 HOME
- 18 Albert Hall
- 19 John Rylands Library
- 20 Odeon Cinema
- 21 Manchester Central Library
- 22 Manchester Town Hall
- 23 Arndale Shopping Centre
- 24 Harvey Nichols and Selfridges & Co.
- 25 China Town

HOTELS

- 1 Great John Street Hotel
- 2 Midland Hotel
- 3 The Hilton Beetham Tower
- 4 The Ox Noble
- 5 The Lowry Hotel
- 6 Luxury Base Apartment Hotel
- 7 Castlefield Hotel
- 8 Macdonald Townhouse Hotel
- 9 Radisson Blu Edwardian
- 10 Hotel Gotham
- 11 INNSIDE Manchester
- 12 The Principal
- 13 Manchester Marriott Victoria & Albert Hotel
- 14 Premier Inn Deansgate Locks

The apartments

—
HOME COMFORTS THAT COUNT

You can be assured that a new home at St George's Gardens will have all the advantages that fine contemporary design, exacting build standards and our commitment to outdoor space in the city can bring.

There's a choice of 138 stunning one and two bedroom apartments over 10 floors all generously equipped for modern living, including a private terrace. The 11th floor provides access to an attractive haven in the sky – a large roof garden affording the space to breathe. There's also the comfort of being part of the new, thriving residential community of Manchester Gardens.

Allocated car parking is available as an additional option while secure cycle storage is provided for residents.







The interiors

—
TAILORING REFINEMENT

A restrained palette of materials has been chosen that have a timeless elegance. Smart home technology can be found in all homes throughout the development. The kitchens' integrated modern appliances ensure superior quality and sit seamlessly with the contemporary handleless kitchen doors.





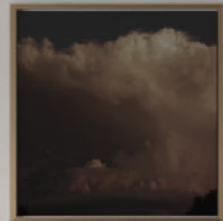
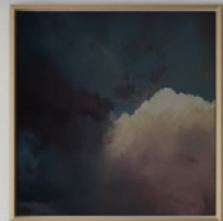




The interiors

—
TAILORING REFINEMENT

Walnut accented features and classic herringbone flooring, complemented by matt black ironmongery adding a contemporary twist to this unique space.



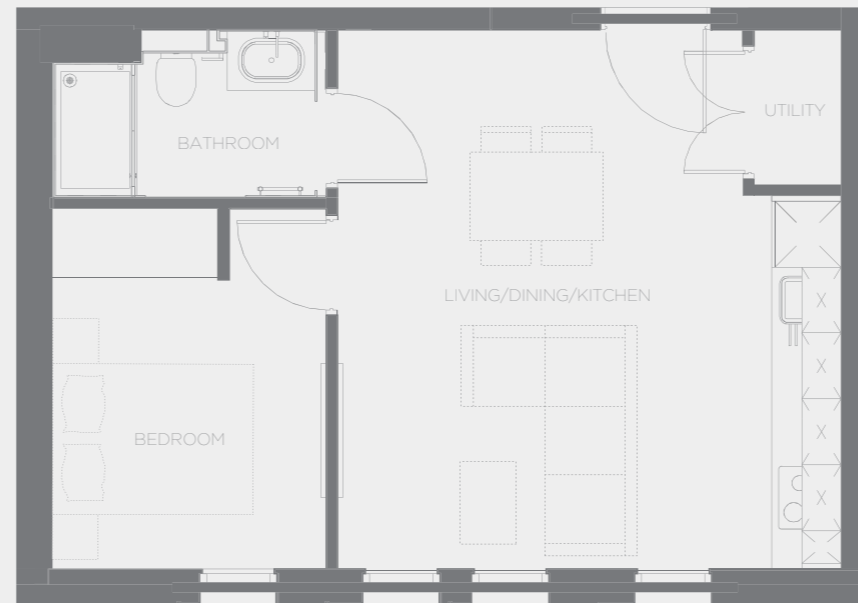
Typical layouts

PLAN YOUR FUTURE

St George's Gardens offers a stylish mix of one and two bedroom apartments and the typical floor layouts featured on the following pages are designed to help you decide on a plan to meet your needs. Each of the ten floors follows the same layout, so the floorplan shown showcases all the available accommodation, providing a guide to what is on offer.

We will be happy to advise on the full range of layouts, facilities and fittings, together with price and availability.

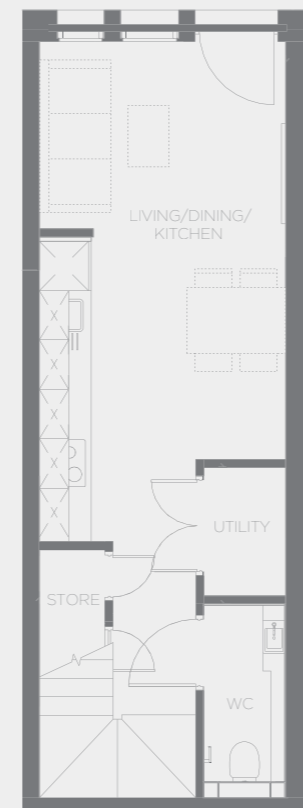
APARTMENT 1B



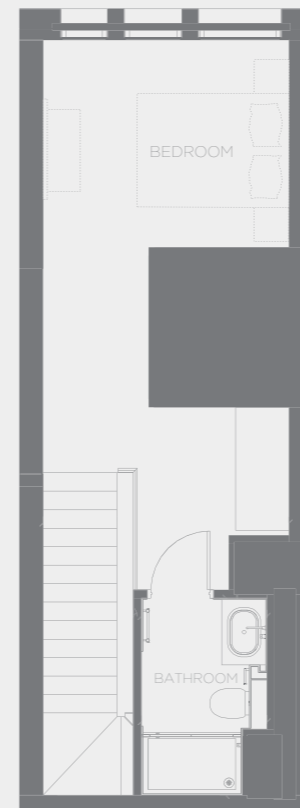
APARTMENT 2D



APARTMENT 1C

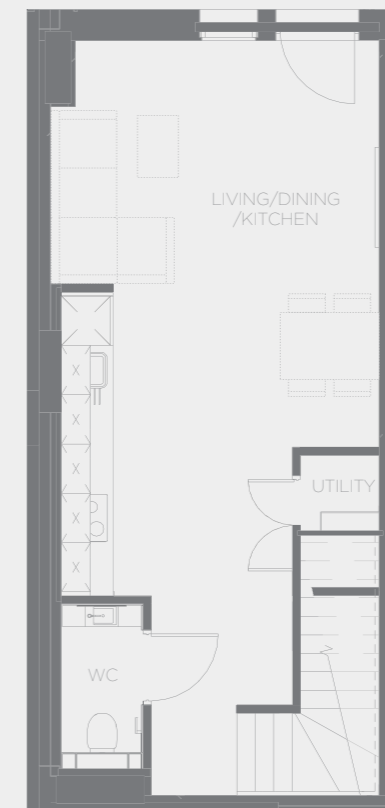


Ground Floor

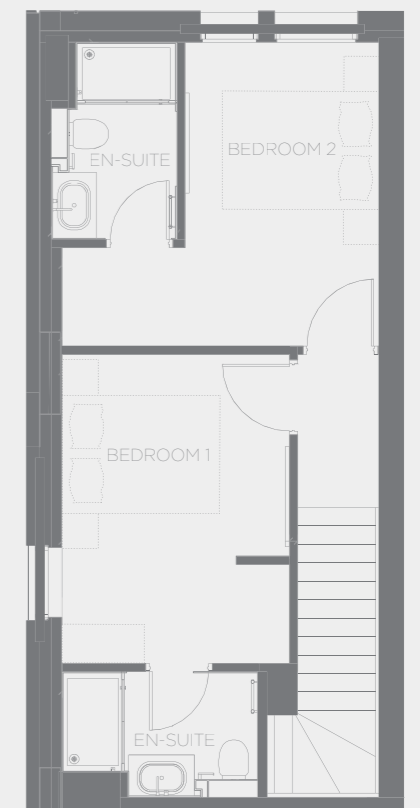


First Floor

APARTMENT 2E



Ground Floor



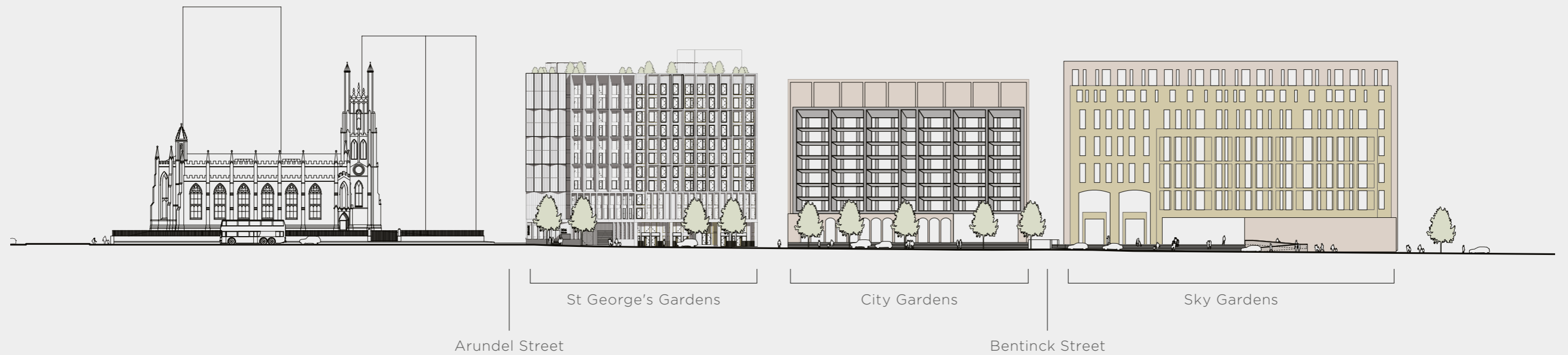
First Floor

Elevations

CHESTER ROAD ELEVATION



CHURCH STREET ELEVATION



Contacts

FOR ALL SALES ENQUIRIES AND TO
REQUEST FURTHER INFORMATION
REGARDING ST GEORGE'S GARDENS
PLEASE CONTACT:

T: +44 (0) 161 639 0055

E: sales@detrafford.com

Brooke Court, Lower Meadow Road,
Wilmslow, Cheshire, SK9 3ND

www.detrafford.com

DETRAFFORD