

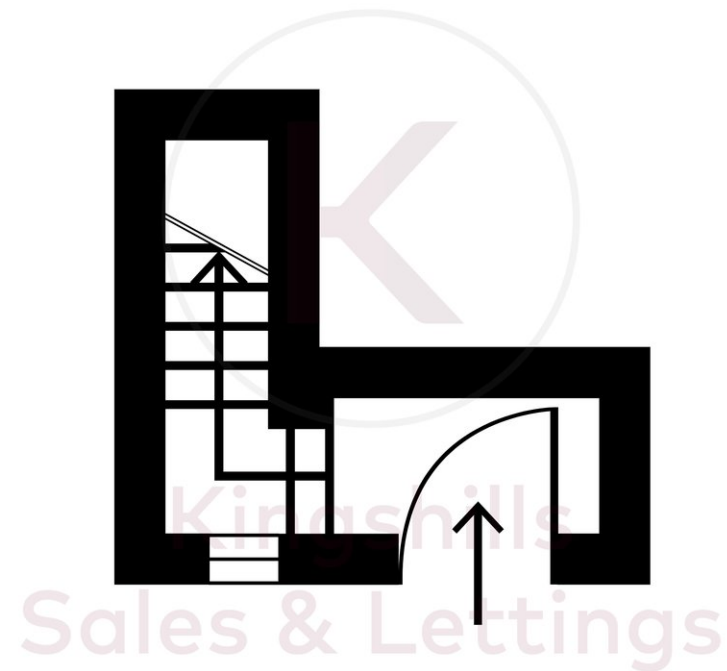


Property Description

A first-floor maisonette located on the west side of High Wycombe within walking distance of the town centre. This brand-new conversion benefits from a private entrance, modern kitchen and bathroom and direct access the loft which can be used as a home office or storage area. Internally the accommodation comprises; entrance; open plan kitchen/living area; bathroom, double bedroom, and loft room. Parking is available for 1 car. Available now.

COUNCIL TAX B

EPC RATING C



Approximate net internal area: 38.22 ft² / 3.55 m²

While every attempt has been made to ensure accuracy, all measurements are approximate, not to scale. This floor plan is for illustrative purpose only and should be used as such by any prospective tenant or purchaser.

Powered by Giraffe360

Kingshills Estate Agents
Comet Studios
Amersham
Buckinghamshire
HP7 0PX

01494 939868
hello@kingshills.co.uk
kingshills.co.uk

Agents Note: Whilst every care has been taken to prepare these particulars, they are for guidance purposes only. All measurements are for general guidance purposes only and whilst every care has been taken to ensure accuracy, they should not be relied upon and potential buyers/tenants are advised to recheck the measurements