



Property Features

- Large Maisonette
- 2 Double Bedrooms
- Living Room/Dining Room
- Refitted Kitchen
- Refitted Bathroom
- Gas Radiator Heating
- Balcony with Views
- Communal Grounds and Garage
- Low Ground rent and Service Charge
- EPC: C / Council Tax Band D

Full Description

A 2 double bedroom maisonette located in Wooburn Green. The property enjoys lovely views from the living room and main bedroom and is in good order throughout. The property also has the benefit of Gas Radiator Heating and a Garage.

Entrance hall, Large Living Room/Dining Room, Kitchen with some built in appliances. 2 Double Bedrooms to the first floor with the main bedroom having a Balcony with lovely views. refitted Family Bathroom.

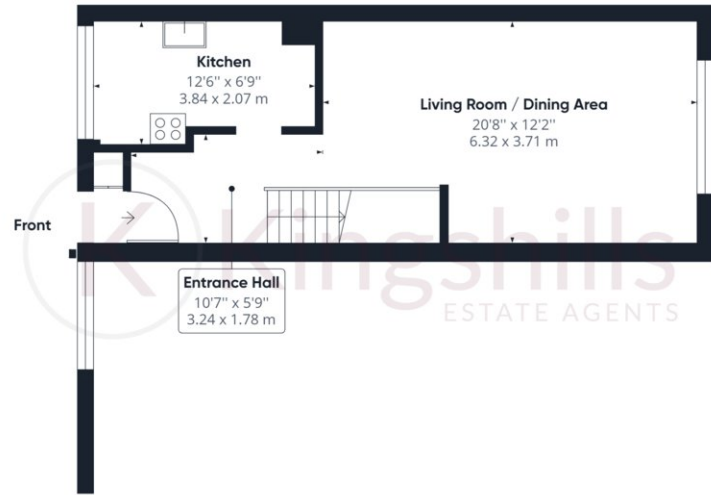
Outside there are communal Grounds and a Garage located close by with residents and visitors parking located to the front.

Lease is 85 years from Aug 2022

Service Charge is circa £700 per annum







Ground Floor Building 1



Floor 1 Building 1



Approximate total area⁽¹⁾

755.68 ft²

70.21 m²

(1) Excluding balconies and terraces

While every attempt has been made to ensure accuracy, all measurements are approximate, not to scale. This floor plan is for illustrative purposes only.

GIRAFFE360

Aston Court
Kingsmead Business Park
High Wycombe
Buckinghamshire
HP11 1JU

01494 939868
hello@kingshills.co.uk
kingshills.co.uk

Agents Note: Whilst every care has been taken to prepare these particulars, they are for guidance purposes only. All measurements are for general guidance purposes only and whilst every care has been taken to ensure accuracy, they should not be relied upon and potential buyers/tenants are advised to recheck the measurements