



BRAICH Y CELYN HALL

Aberdovey | Gwynedd | Wales | LL35 0RD

FINE & COUNTRY

Braich Y Celyn Hall

Braich Y Celyn Hall

Situated in an idyllic location with panoramic views overlooking the Aberdovey Estuary and extending towards the sea, Braich Y Celyn Hall is a property of significant historical and architectural distinction. Nestled within approximately five acres of meticulously landscaped grounds, this elegant residence seamlessly blends four centuries of history with modern convenience.

Originally constructed as a two-storey farmhouse around 400 years ago, the estate has undergone thoughtful extensions and renovations, including a third floor added during the Regency Era and an additional wing during the Victorian period. The result is a versatile residence in immaculate condition that offers a unique blend of classic and contemporary features.

Upon entry, one is greeted by a magnificent galleried hall that serves as a grand focal point, granting access to the various rooms on the ground floor. The kitchen and open-plan sitting room, located in one wing of the house, enjoy a triple aspect that allows for an extraordinary influx of natural light. Dual French windows frame a log-burning stove, offering splendid views over the gardens and the Aberdovey Estuary beyond.

The dining room further enhances the connection to the exterior via its own set of French doors. A cast-iron fireplace, complemented by two arched recesses, provides a classic centerpiece. Similarly, the drawing room is optimally designed to offer breathtaking vistas over the estate's grounds and the estuary, complemented by a distinguished fireplace and three sets of French doors leading out.

The lower ground floor is home to a capacious games room, a wine cellar, and a game larder. The primary stairway ascends to the first floor, which hosts the master and second bedroom suites—both of which boast spectacular coastal views and en-suite bathrooms. High ceilings and fitted wardrobes contribute to the overall sense of luxurious comfort. An additional room on this floor, currently employed as an office, also enjoys the property's iconic views.

The second floor accommodates three more bedrooms, one of which includes an en-suite shower room and a small kitchen—making it ideally suited for staff or as a self-contained annex. A family bathroom serves the remaining two bedrooms.

The estate's extensive grounds, adorned with a variety of specimen shrubs and trees, offer not only aesthetic appeal but also functional spaces, including ample parking and two large garages.

Location & Amenities

Braich Y Celyn Hall is located to the East of Aberdovey, a charming village renowned for its range of outdoor pursuits, well-regarded restaurants, public houses, and cafes. Local leisure facilities include sailing, fishing, and an international golf course. The nearby town of Machynlleth offers a more extensive range of amenities. With excellent road and rail connectivity, the estate provides easy access to Welshpool, Oswestry, Chester, and beyond.





In summary, Braich Y Celyn Hall represents a rare opportunity to acquire a property that marries historical elegance with modern convenience, all set against the backdrop of some of Wales' most breathtaking scenery.

Aberdyfi is a small seaside village founded in 1800 on the north side of the Dyfi estuary in southern Snowdonia. It is where the river Dyfi meets the green-blue waters of Cardigan Bay. Aberdyfi is one of those simple, seductive little resorts that hits the right spot. All the ingredients are here – a golden beach, crabbing and fishing from the quayside, yachts in the bay and views across the estuary to admire.

Quaint old streets rise up to spectacular viewpoints whilst in the heart of the village you can enjoy browsing in specialist boutiques and art galleries or dine in exceptional inns and restaurants. Or you can simply sit in this idyllic setting and relax.

The village was founded around the shipbuilding industry and boasts a number of excellent beaches and a championship golf club. The first ever outward bound centre opened in Aberdyfi in 1941 and the town continues to have a strong yacht club and is a haven for water sports enthusiasts.

You don't need to travel too far from Aberdyfi to find a different world - that of spectacular mountain and valley scenery. The peaks of the Cadair Idris and Aran Fawddwy ranges are within easy reach and are complimented by the charm of the Dovey and Dysynni valleys nearby. An ideal area for walkers, climbers and wildlife watchers.

Vendor Interview:

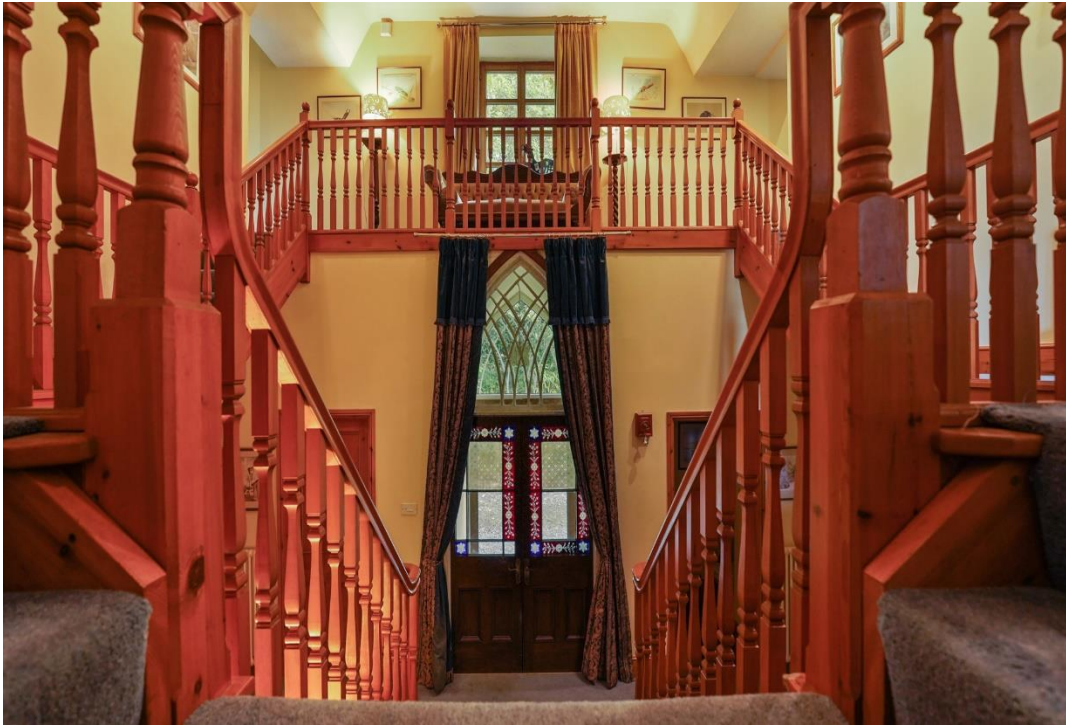
"We decided to buy Braich Y Celyn Hall after looking at many houses. This house has been built in the 16th, 17th and 18th centuries. They certainly new about building in the right location, and will be still standing here in another three hundred years.

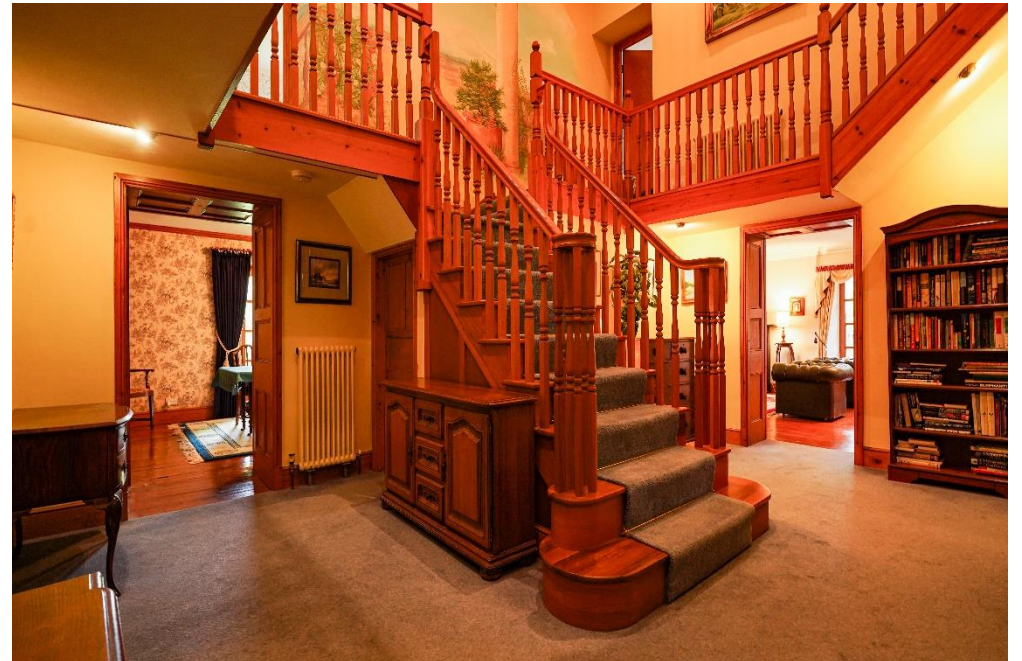
The Hall has a warm, relaxing and cosy feel throughout, which is nestled into the land and provides commanding views of the Dyfi Estuary; through many of the rooms. We are often able to sit out late into the summer evening, and relax watching the Red Kites, Buzzards and circling on the thermals above us. Not to be out done Merlin our dog has the owls to keep a watchful eye.

We liked that the garden was a blank canvas and so now we have been able to structure the garden with specimen trees i.e. Liriodendron Tulipifera, flowering for the first time in 15 years with Acers, Magnolias and Camellia".

Video Link QR Code:













Fine & Country West Wales

The Gallery, Station Approach, Station Building, Aberystwyth, SY23 1LH

Tel: 01974 299 055 | nigel.salmon@fineandcountry.com

FINE & COUNTRY
fineandcountry.com™