



Property Features

- Vastly Improved Semi Detached Home
- Catchment of Highly Regarded Schools
- 3 Generous Bedrooms
- Living Room and Family Room/Home Office
- Stunning Kitchen/Breakfast Room
- Refitted Bathroom
- Level and Enclosed Rear Gardens
- Ample Driveway Parking
- Double Glazing and Gas Radiator Heating
- EPC 69 C / Council Tax Band D

Full Description

This lovely and vastly improved semi detached family home that has been upgraded in many ways by the present owners and located in on the ever popular Georges Hill development in Widmer End. Whilst in catchment of the highly regarded Widmer End Combined School this home is also close to local shops and open countryside.

Accommodation

Entrance Hall, Living Room, recently refitted Kitchen/Breakfast Room in Shaker Style units with a light stone worktop. The Kitchen also has double doors that lead on to the rear patio. The garage has been converted to now offer a Family Room/Home Office and to the rear of this there is a Utility Room. To the first floor there are three generous bedrooms and a large bathroom that has recently been upgraded.

Outside to the rear the garden is level and enclosed by fencing for a good degree of privacy and benefits from a sun patio. To the front there is a large block paviour driveway parking for 3 to 4 cars.

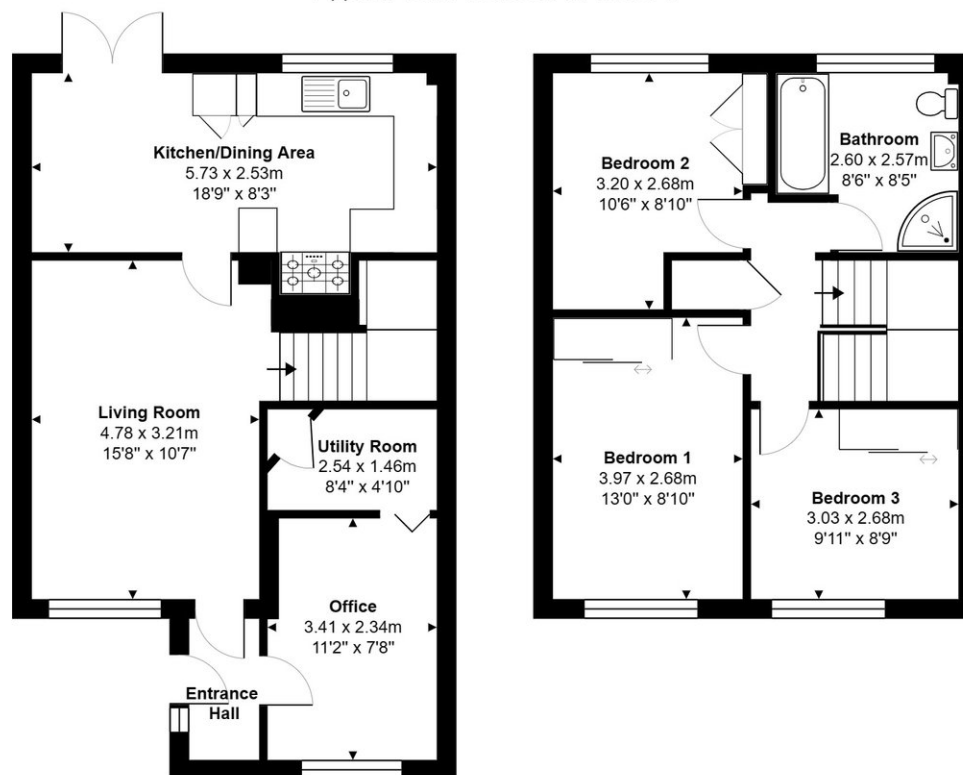
The property also benefits from double glazing and gas radiator heating.





Snowdrop Way, Widmer End, HP15 6BL

Approx. Total Area: 83.4 m² ... 897 ft²



Whilst every attempt has been made to ensure the accuracy of the floorplans contained here, measurements of doors, windows and rooms are approximate and no responsibility is taken for any error, omission or mis-statement. These plans are for representation purposes only.

Kingshills Estate Agents
Comet Studios
Amersham
Buckinghamshire
HP7 0PX

01494 939868
hello@kingshills.co.uk
kingshills.co.uk

Agents Note: Whilst every care has been taken to prepare these particulars, they are for guidance purposes only. All measurements are for general guidance purposes only and whilst every care has been taken to ensure accuracy, they should not be relied upon and potential buyers/tenants are advised to recheck the measurements