

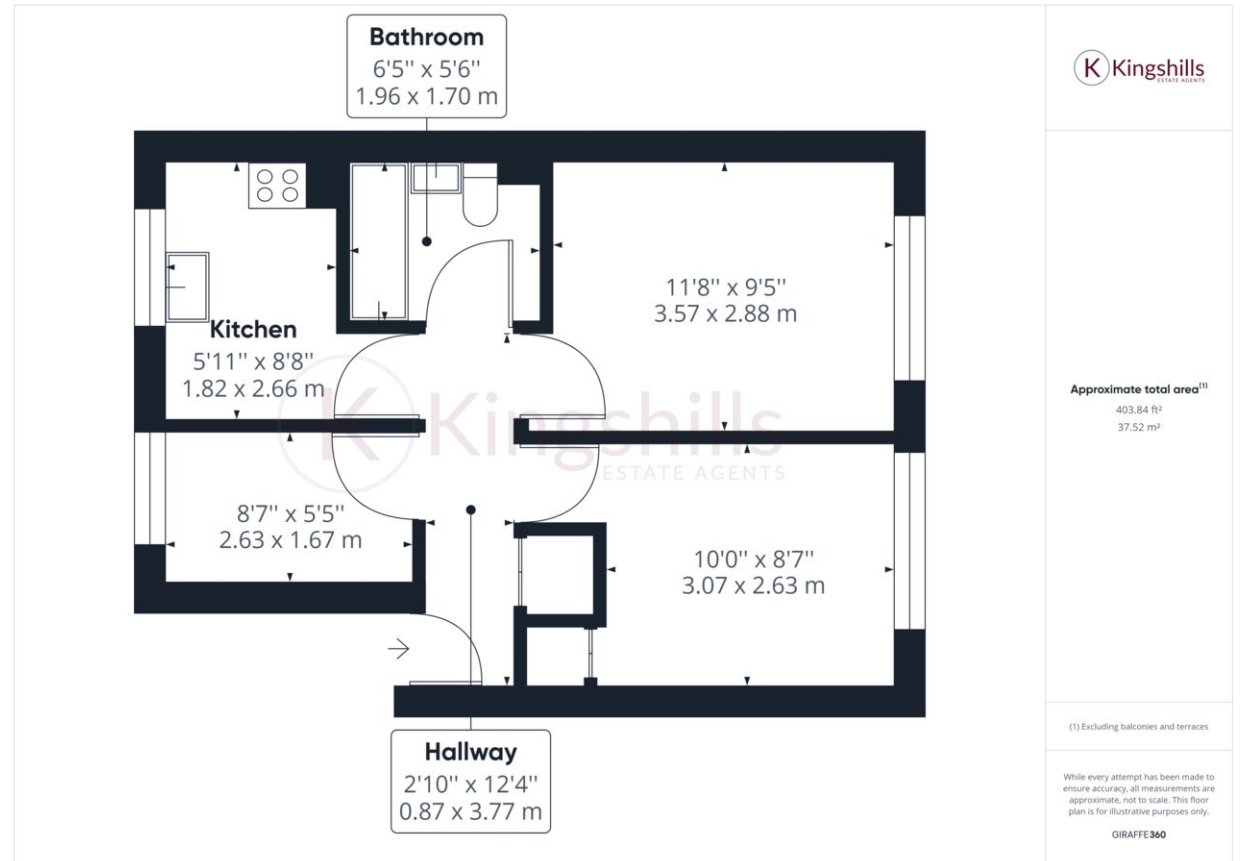


Property Description

A two-bedroom apartment that is available for occupation from early July on an unfurnished basis. The property is located on the east side of High Wycombe in Loudwater and has excellent commuter links to the M40 and access to local amenities. The accommodation comprises; entrance hall; living room; fitted kitchen, 2 bedrooms; bathroom. The property also has the benefits from allocated parking and additional visitor parking.

COUNCIL TAX C

EPC RATING C



Kingshills Estate Agents
Comet Studios
Amersham
Buckinghamshire
HP7 0PX

01494 939868
hello@kingshills.co.uk
kingshills.co.uk

Agents Note: Whilst every care has been taken to prepare these particulars, they are for guidance purposes only. All measurements are for general guidance purposes only and whilst every care has been taken to ensure accuracy, they should not be relied upon and potential buyers/tenants are advised to recheck the measurements