



Property Features

- Extended semi-detached house
- Bay fronted living room
- Family area.
- Stunning Kitchen/diner
- Utility/shower room
- Convenient location for access to M40
- Large rear garden
- Garage
- Driveway parking
- Awaiting EPC / Council Tax Band D

Full Description

Welcome to this bay fronted semi-detached house situated to the south of High Wycombe. Boasting a stunning extension to the rear, this property offers a contemporary twist to traditional living, perfect for modern families seeking both style and functionality.

Upon entering, you're greeted by a welcoming bay fronted living room, exuding warmth and character. Adjacent lies a separate family area, providing versatility for various lifestyles. The highlight of the ground floor is undoubtedly the expansive kitchen/diner, a masterpiece of design and functionality. The seamless extension creates a spacious environment flooded with natural light, ideal for entertaining or enjoying quality family time. This area flows into a utility space, offering convenience, while the ground floor shower room adds practicality to everyday living.

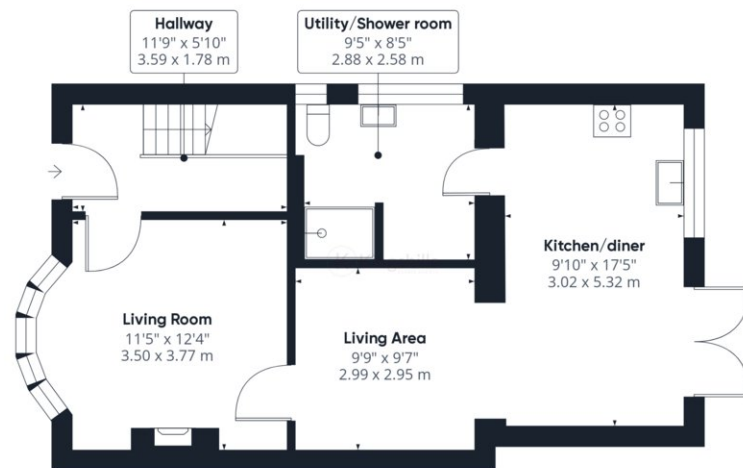
Ascending to the first floor, you'll find three bedrooms, each offering a tranquil retreat after a long day. A family bathroom completes this level, featuring modern fixtures and fittings for utmost comfort.

Outside, the property boasts a generous garden, providing ample space for outdoor activities and relaxation. Additionally, driveway parking and a garage offer convenience and security, fulfilling all your practical needs.

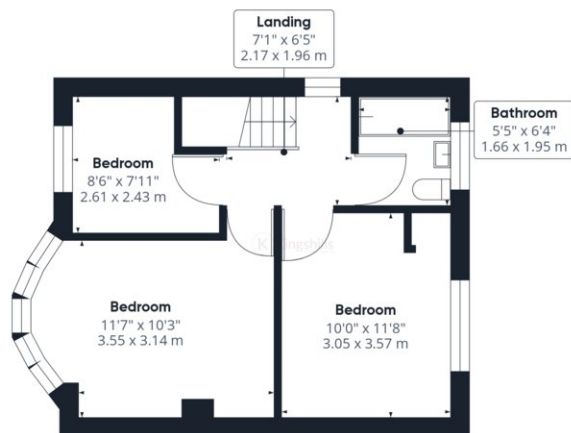
With its blend of traditional charm and contemporary flair, this semi-detached house presents an exceptional opportunity to purchase a home that requires very little work. Just bring your belongings and move in!



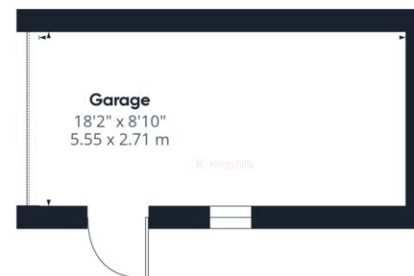




Ground Floor Building 1



Floor 1 Building 1



Ground Floor Building 2

Approximate total area⁽¹⁾
 1139.65 ft²
 105.88 m²

(1) Excluding balconies and terraces

While every attempt has been made to ensure accuracy, all measurements are approximate, not to scale. This floor plan is for illustrative purposes only.

GIRAFFE360