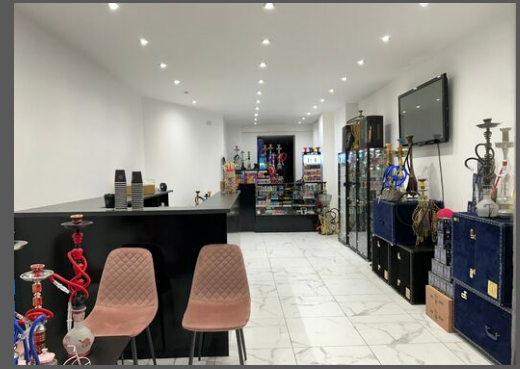


£1,450

Property: Askew Road, London, W12 9BL



Features

- Renewable lease
-
-
-
-
-
-
-
-
-

Retail Premises to Rent

Outstanding opportunity to acquire A lease in respect of the spacious premises, which in our opinion have terrific potential to establish A profitable retail business.

Ground floor lock-up shop. The premises have access via the front and rear.

The shop has E use and is suitable for a variety of Retail businesses

Available Now!

Rent: 1,450 per month

Goodwill: 50,000

Zero Business Rates after full relief (Please contact local

Greenford

322 Ruislip Road East, London, UB6 9BH

020 3962 9244

info@starestateagents.co.uk



FLOORPLAN

EPCs

Greenford

322 Ruislip Road East, London, UB6 9BH
020 3962 9244
info@starestateagents.co.uk



Star Estate Agents