

24 Peninsula Quay Pegasus Way Gillingham

Price: £270,000

“

Owner's comments

Information

IDEAL PROPERTY INVESTMENT This SECOND floor one bedroom apartment is in the popular development Victory Pier built by Berkeley Homes. This apartment was built in 2017 and it is currently rented out for £1,100 PCM. The apartment is well presented and has amazing views of the river and the garden terrace, the open plan living area is well designed and includes integrated fridge/freezer, dishwasher, electric oven and hob. There is a large storage cupboard which has the washing machine. The main bedroom is well sized, includes built in

”

24 Peninsula Quay Pegasus Way

Gillingham

Price £270,000



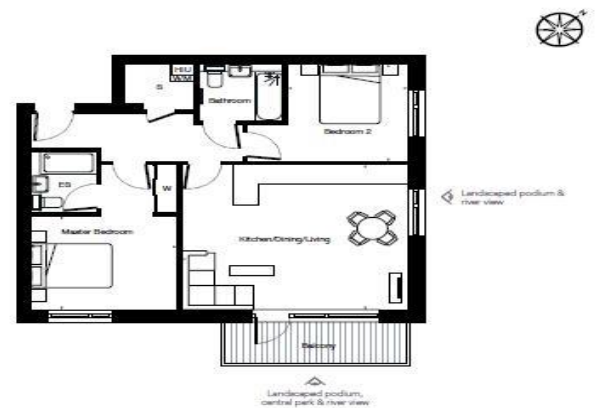
Description

Summary of accommodation

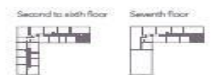
- IDEAL PROPERTY INVESTMENT
- CURRENTLY RENTED OUT
- EXCLUSIVE BERKELEY HOMES DEVELOPMENT
- POPULAR LOCATION
- HIGH SPECIFICATION
- 819 Sq Ft
- OPEN PLAN LIVING
- UTILITY ROOM
- RIVER VIEWS
-
-
-

2 BEDROOM APARTMENT

PLOTS 201, 301, 401, 501, 601 & 701



Kitchen/Dining/Living	5.60m x 4.80m	18'4" x 15'9"
Master Bedroom	3.65m x 3.19m	12'0" x 10'5"
Bedroom 2	3.30m x 2.90m	10'10" x 9'6"
Gross Internal Area	74.8 sq m	805.57 sq ft



Medway Premier Homes.com Ltd

Email: info@medwaypremierhomes.com

Website: www.medwaypremierlettings.com

Tel: 01634 361245

Fax:

