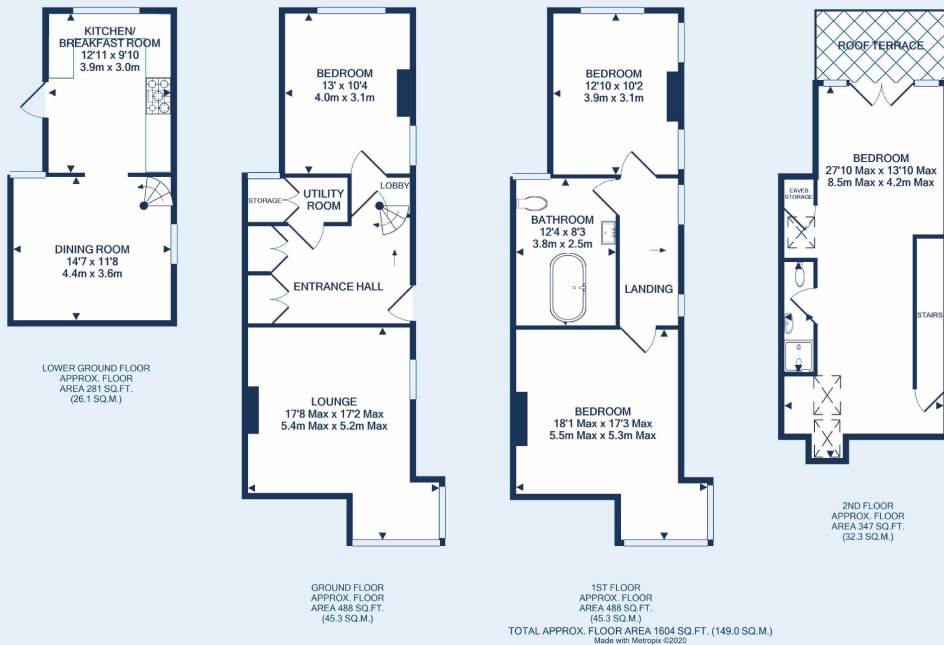


Westbury-on-trym - Fixed asking price £650,000

4 bed end of terrace house

42 Eastfield Road, BS9 4AD





Ocean are delighted to present to the BS9 market this grand and captivating end terraced home with arguably the best view in the village, it is located in the heart of the village of Westbury on Trym.

This rare & quirky home presents itself over four floors of characterful and spacious accommodation consisting entrance hall, lounge with wood burning stove, dining room, separate kitchen, main family bathroom, four bedrooms including a breathtaking master at the top of the house with ensuite and walk out roof terrace and the spacious 2nd bedroom has a Juliette balcony.

The property further benefits from front, side and rear gardens, rear access, off street parking and the very unique and breath taking roof terrace with far reaching views across the village and towards the Blaise & Kingsweston estates, Abbots Leigh and the Gordano Valley.

The house is just a short but steep stroll into the village with its eclectic mix of shops, restaurants and cafés. Fantastic local schools, local bus routes & the health centre are all in close proximity.

A viewing is highly recommended to see what this property has to offer.



Westbury on Trym Office
73 Westbury Hill, Westbury-on-Trym, Bristol,
BS9 3AD
Call: 0117 9621973
Mail: westburysales@oceanhome.co.uk
Search: oceanhome.co.uk

References to the Tenure of a Property are based on information supplied by the Seller. The Agent has not had sight of the title documents. Lease details, service ground rent (where applicable) are given as a guide only and should be checked and confirmed by your solicitor prior to exchange of contracts.