



Property Features

- Ground Floor Apartment
- Close to Local Amenities
- 2 Double Bedrooms
- Open Plan Living Room/Kitchen
- Kitchen with Fitted Appliances
- Lovely Fitted Bathroom
- Remainder of a Long Lease
- Allocated Parking
- No Onward Chain
- EPC 74 C / Council Tax Band C

Full Description

An immaculate ground floor apartment located on the popular Manor Farm Development. Built in 2018 by a local developer the property is ideally located not far from local amenities including shops, doctors and local schools and also benefiting from NO ONWARD CHAIN.

Accommodation

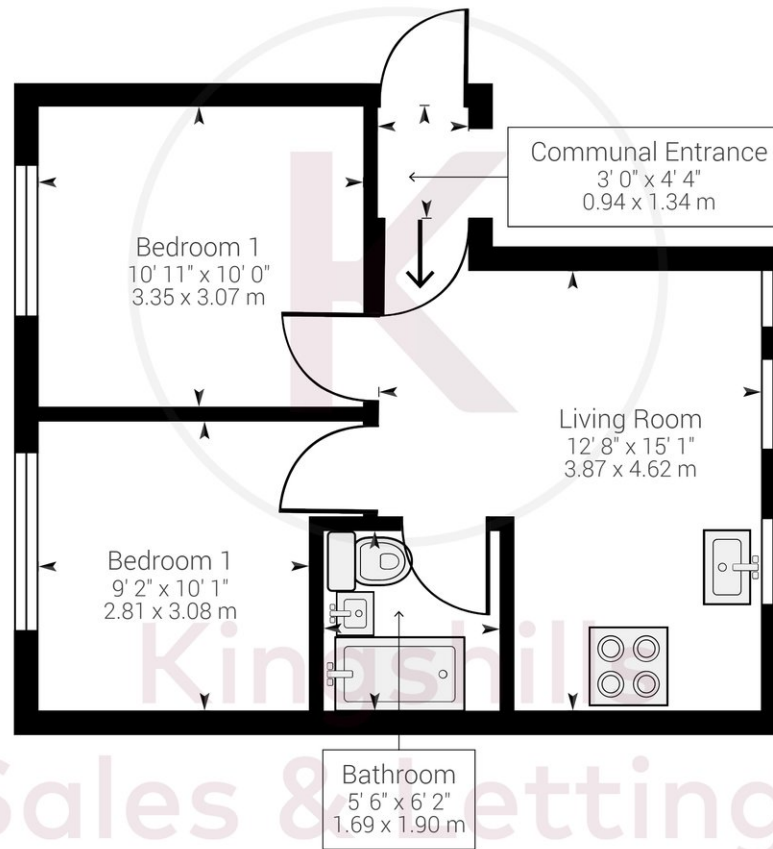
Entrance via a security Entry Phone System, Communal Entrance Hall, Open Plan Living/Kitchen with the Kitchen area having modern units and integrated appliances including Fridge/Freezer, Oven and Hob, 2 Good sized Bedrooms and Lovely Fitted bathroom. The property also benefits from Double Glazing and 1 parking space.

Hazlemere

Ideal for families, Hazlemere is situated just 2 miles north of High Wycombe. It has well regarded schools for both primary and secondary age ranges, along with great amenities. Shops, pubs and cafes as well as easy links to both High Wycombe and Amersham for London Train services make Hazlemere a fantastic base for commuters, whilst the M40 can be accessed at Junction 3 for both London and Birmingham. This village offers a wonderful mid-point between town and country being surrounded by beautiful open countryside and woodland close by.







Approximate net internal area: 422.85 ft² / 39.28 m²

While every attempt has been made to ensure accuracy, all measurements are approximate, not to scale. This floor plan is for illustrative purpose only and should be used as such by any prospective tenant or purchaser.

Powered by Giraffe360

Kingshills Estate Agents
Comet Studios
Amersham
Buckinghamshire
HP7 0PX

01494 939868
hello@kingshills.co.uk
kingshills.co.uk

Agents Note: Whilst every care has been taken to prepare these particulars, they are for guidance purposes only. All measurements are for general guidance purposes only and whilst every care has been taken to ensure accuracy, they should not be relied upon and potential buyers/tenants are advised to recheck the measurements