



PINEBROOK  
ESTATES

PRESENTS

CHESTERFIELD HOUSE, CHESTERFIELD GARDENS, MAYFAIR W1J

## Chesterfield House



### London 'Pied-A-Terre' Home or Investment In the Heart of Mayfair

Nestled off Curzon Street, is this remarkable three double-bedrooms apartment with two reception rooms and two en-suite bathrooms, situated on the fourth floor in this charming historical building. Located in a tranquil cul-de-sac offering a peaceful oasis amidst the bustling cosmopolitan ambience of Mayfair.



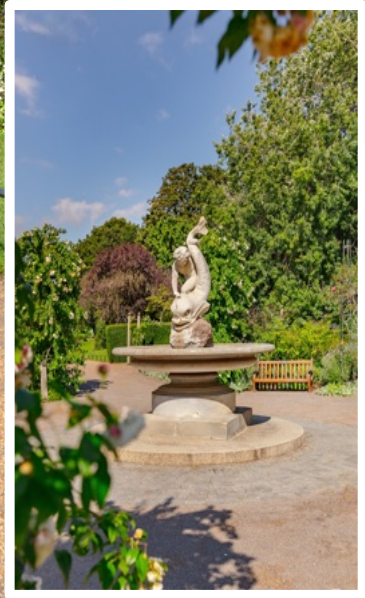
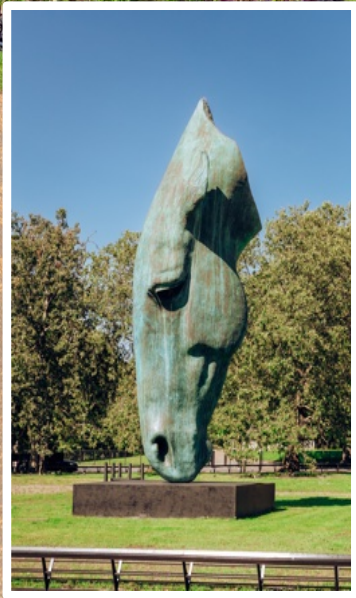
- 
- Three double bedrooms
  - Two bathrooms
  - Guest cloakroom
  - Eat-in kitchen
  - Fourth floor
  - Share of Freehold
  - Two receptions
  - Great storage
  - 24/7 Concierge
  - Lift
  - Visitor parking
  - Chain free
  - High ceilings
  - Period features
  - Abundance of light
  - Cul- de-sac
  - Communal garden
  - Prime Mayfair location
  - Moments from Hyde Park
  - Moments from Grosvenor Square
  - Near fashionable shops & restaurants
  - Near transport

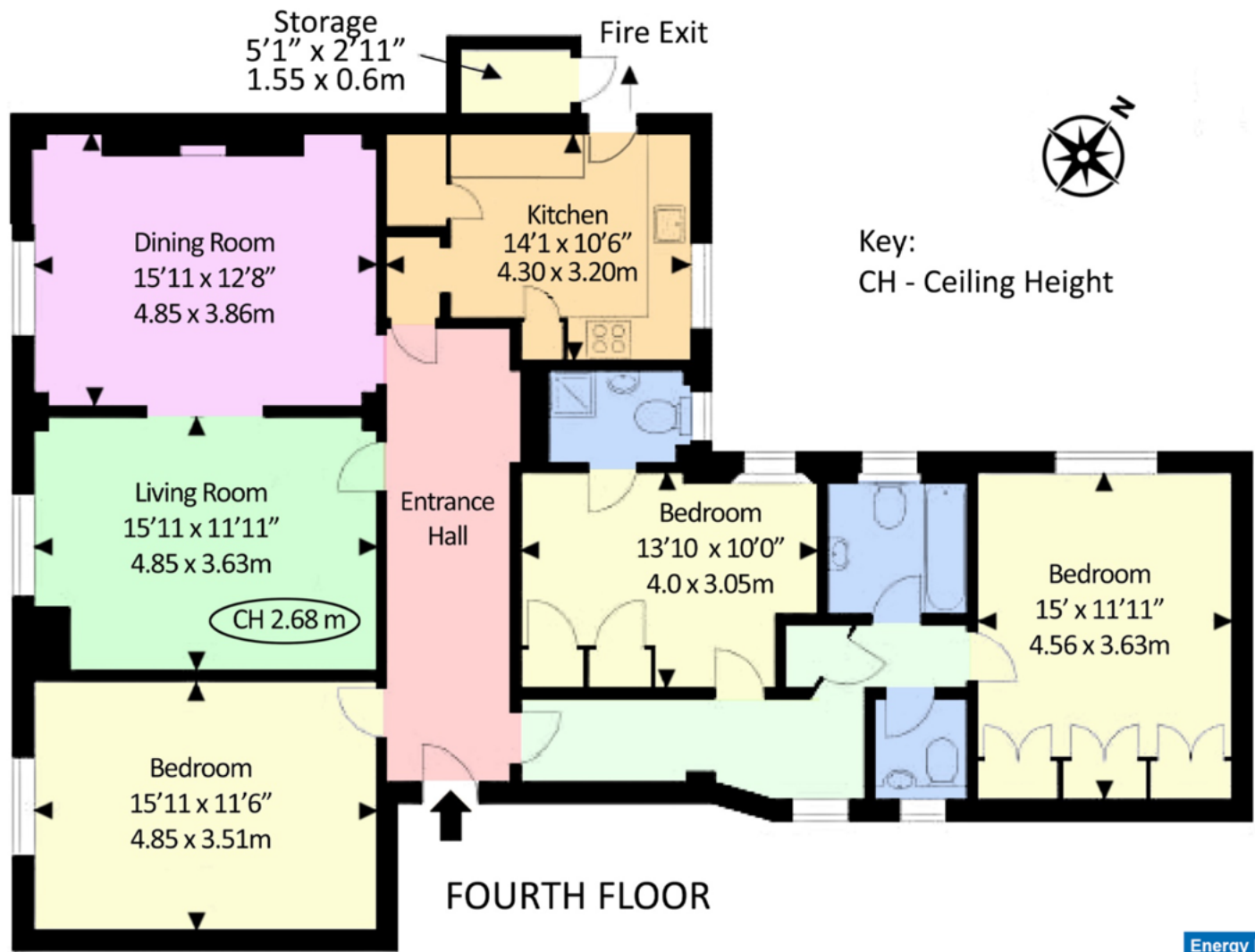
**Chesterfield House on Chesterfield Gardens presents an extraordinary opportunity to own a prestigious residence in the heart of London's Mayfair, offering luxury, elegance, and an unparalleled lifestyle.**



Boasting a grand 1402 sq ft / 130 m2, offers generous living accommodation perfectly suited for both lavish living and elegant entertaining. In addition to great space, this charming property also offers a spacious kitchen, guest cloakroom, grand hallway, and demised addition storage. As a block Chesterfield House benefits from a lift, 24/7 Concierge, communal gardens, and visitor parking. Chesterfield House stands as a testament to the architectural grandeur of Mayfair. Its prime location offers unparalleled accessibility to luxury shopping, fine dining, and entertainment.







**FOURTH FLOOR**

Approximate Gross Internal Area  
1402 SqFt - 130.02 SqM


Not to scale, for guidance only and must not be relied upon as a statement of fact.  
All measurements and areas are approximate only.

Energy Efficiency Rating		
	Current	Potential
Very energy efficient - lower running costs		
(92-100) <b>A</b>		
(81-91) <b>B</b>		85
(69-80) <b>C</b>	73	
(55-68) <b>D</b>		
(39-54) <b>E</b>		
(21-38) <b>F</b>		
(1-20) <b>G</b>		
<i>Not energy efficient - higher running costs</i>		



Viewings strictly by appointment.  
Please contact our agent Bozena Dela

4<sup>th</sup> Floor Silverstream House,  
45 Fitzroy Street, Fitzrovia  
London W1T 6EB

 + 44 (0) 7863 172 705

 + 44 (0) 203727 7977

 [info@pinebrookestates.co.uk](mailto:info@pinebrookestates.co.uk)

 [www.pinebrookestates.co.uk](http://www.pinebrookestates.co.uk)

