



**Regency Court, Providence Street
Coventry, CV5 6HA**

Rent: £775 PCM

AVAILABLE FROM: 22/03/2024



1



1



1

- 1 Bedroom 2nd Floor Apartment
- Shops and Amenities Nearby
- Easy Access to Public Transport Links
- Off Street Parking
- Suitable for 1 or 2 Person Occupancy
- Bills NOT Included

Location: Along Albany Rd into Earlsdon Street, turn left into Providence Street and take first right into Regency Court

**Paul
Chillingsworth
Homes**

Email: enquiries@covagent.co.uk

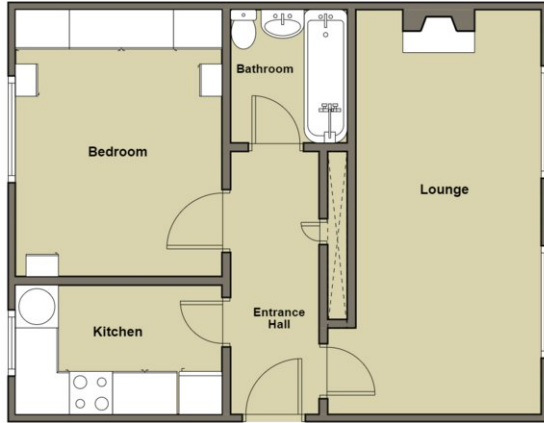
Call **02476 258492**

Website: www.covagent.co.uk



Floorplan

For identification purposes only- NOT TO SCALE
Position of doors & windows are approximate



Floorplan is for general guidance only and is NOT to scale. Position of doors, windows and furnishings is approximate.

Set back just a short walk away from the bustling Earlsdon Street with local shops, amenities, bars and eateries this 1 Bedroom property, situated on the top floor, is part of a 3 storey purpose built block.

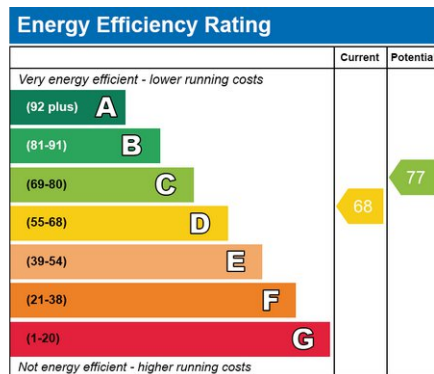
Offered Un-Furnished the property comprises of Hallway, Lounge, Kitchen with Appliances, Bedroom with Built-In Storage and Bathroom and benefits from Security Entryphone system, Off Street Parking and Communal Gardens.

Communal Entrance	With entryphone system, mail box and stairs to the 2nd floor
Hallway	With laminate flooring and airing cupboard
Lounge	4.01 x 3.58 - (13'2" x 11'9") Carpeted with feature fireplace, double glazed windows and storage heater.
Kitchen	3.96 x 1.98 - (13'0" x 6'6") Vinyl flooring with range of base and wall units with roll edge worktops, fridge/freezer, washing machine, inset electric hob, built under electric oven and double glazed window
Bedroom	3.96 x 2.97 - (13'0" x 9'9") Carpeted with range of built in storage, double glazed window and storage heater
Bathroom	Vinyl flooring with bath having electric shower over, wash basin and WC
Outside	Communal gardens to the rear and off street parking to the front

RENT: £775 pcm	BILLS NOT INCLUDED
AVAILABLE FROM: 22/03/2024	RENTAL TERM: Long Term
SECURITY DEPOSIT: £894.23	HOLDING DEPOSIT: £178.84 *
COUNCIL TAX BAND: A	EPC RATING: D

*Holding deposit will form part of the first months rent on move-in. Deposit is not refundable for unsuccessful application or application withdrawal

EPC



Email: enquiries@covagent.co.uk

Call **024 76 258492**

Website: www.covagent.co.uk

Correspondence address: Friars House,
Manor House Drive, Coventry CV1 2TE

**Paul
Chillingsworth
Homes**