



44 Wayfarers End, Longwick, Princes Risborough, Buckinghamshire, HP27 9FT

Asking Price | £475,000

Property Features

- Modern 3 bedroom semi detached home
- Chic interiors
- Surrounded by countryside and fronting onto a green
- Contemporary Kitchen/diner
- Three bedrooms with fitted wardrobes to the main bedroom
- Modern bathroom and en-suite to the main bedroom
- Good size living room
- Car port for 2 vehicles.
- Mature rear garden
- EPC 85 B / Council Tax Band E

Full Description

Situated in the picturesque village of Longwick, Buckinghamshire, this stunning 3-bedroom semi-detached home in Princes Risborough offers the perfect blend of contemporary living and serene rural charm. Set within a sought-after development, this property boasts chic interiors and a thoughtfully designed layout, making it an ideal family home.

As you approach the property, you are greeted by its pleasant façade built in a traditional brick and flint style that seamlessly blends contemporary design with timeless architectural character. As you step inside this modern property you will discover a beautifully presented and spacious hallway which creates an immediate sense of openness and flow as soon as you step inside. All the key rooms of the home branch off from this central hallway, offering easy access to every part of the property.

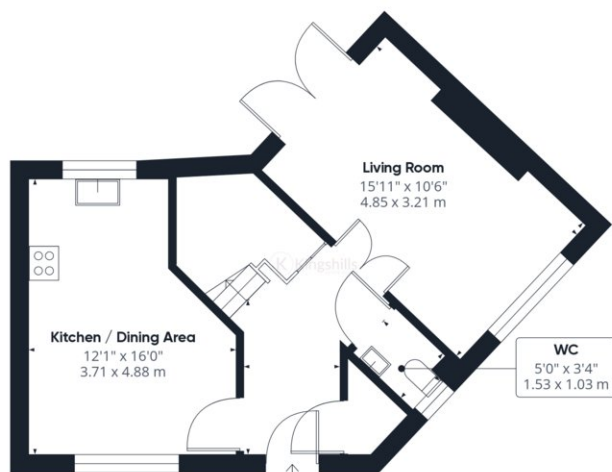
The generous living room provides a cosy and stylish space for relaxation and entertainment. The french doors open out onto a private patio area extending the living space into the outdoors and is the perfect space for enjoying alfresco dining or a morning coffee in your private retreat. The kitchen/diner is a chef's delight, featuring sleek countertops with ample storage for appliances and everyday living. There's ample room for both a dining table and a sofa, allowing you to effortlessly entertain family or guests while preparing meals.

Upstairs, you'll find three well-proportioned bedrooms, offering comfortable accommodation for the entire family. The main bedroom is a true retreat, complete with fitted wardrobes and a contemporary en-suite bathroom, providing a private sanctuary for unwinding at the end of the day. The additional two bedrooms are equally impressive, offering flexibility for a growing family, guests, or a home office. The modern family bathroom is elegantly designed, featuring premium fixtures and fittings, ensuring that every aspect of this home reflects the highest standards of living.

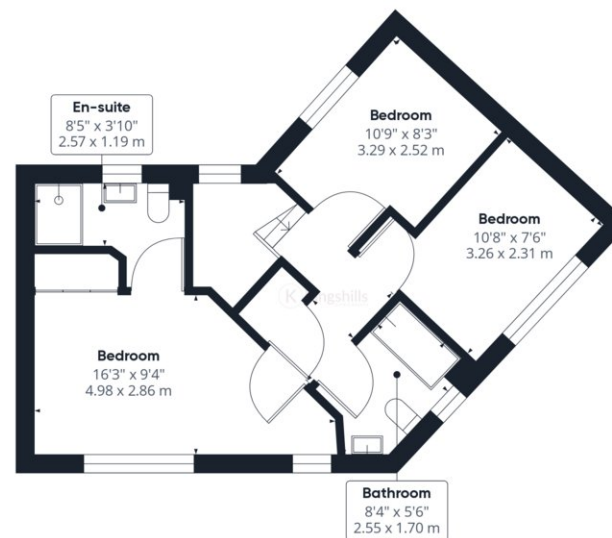
As well as being adjacent to a spacious green there is also a mature garden, offering a private retreat to enjoy year-round. The presence of a carport for your own use provides sheltered parking for two vehicles and has the option for charging electric vehicles, adding to the convenience of modern living.







Ground Floor



Floor 1

Approximate total area⁽¹⁾

908.69 ft²
84.42 m²

(1) Excluding balconies and terraces

While every attempt has been made to ensure accuracy, all measurements are approximate, not to scale. This floor plan is for illustrative purposes only.

Calculations are based on RICS IPMS 3C standard.

GIRAFFE360