

Meadow View

BISHOP'S DRIVE, BALTONSBOROUGH, SOMERSET, BA6 8FX

The Nook

(Plot 20)

Ready
Summer
2024



An exquisite & characterful stone-built detached cottage

Four beds, two baths | Utility/Boot Room | South West facing private gardens
Single garage with private driveway | Views over the Somerset countryside

- Quartz worktops
- Air source heat pump
- Private 7kW EV Charging Point
- Woodburning stove
- 10 year warranty
- Superfast broadband capabilities

Asking price: £650,000

Selling agents:

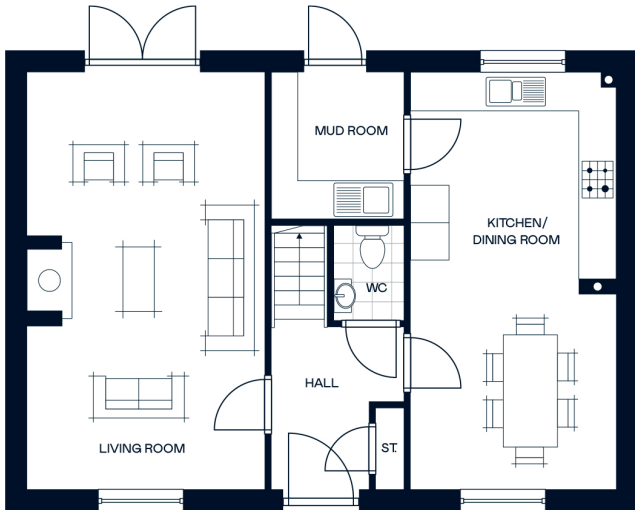
holland & odam

01458 833123

hollandandodam.co.uk

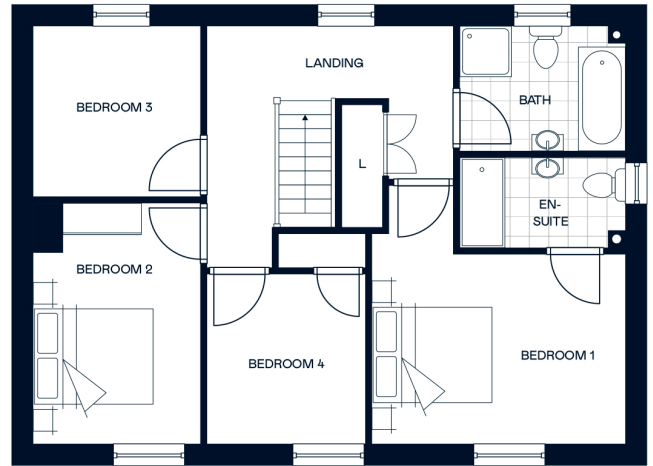
A development by:

GALION



Ground Floor

Kitchen/Dining	3.33m x 6.70m
Living Room	3.83m x 6.70m
Mud Room	2.13m x 2.37m



First Floor

Bedroom 1	4.05m x 3.06m
Bedroom 2	2.68m x 3.87m
Bedroom 3	2.68m x 2.74m
Bedroom 4	2.57m x 2.79m



Notes:
