



Flat 6 Sekhon House Kingsmead Road, High Wycombe, HP11 1UZ

Asking Price | £1,500

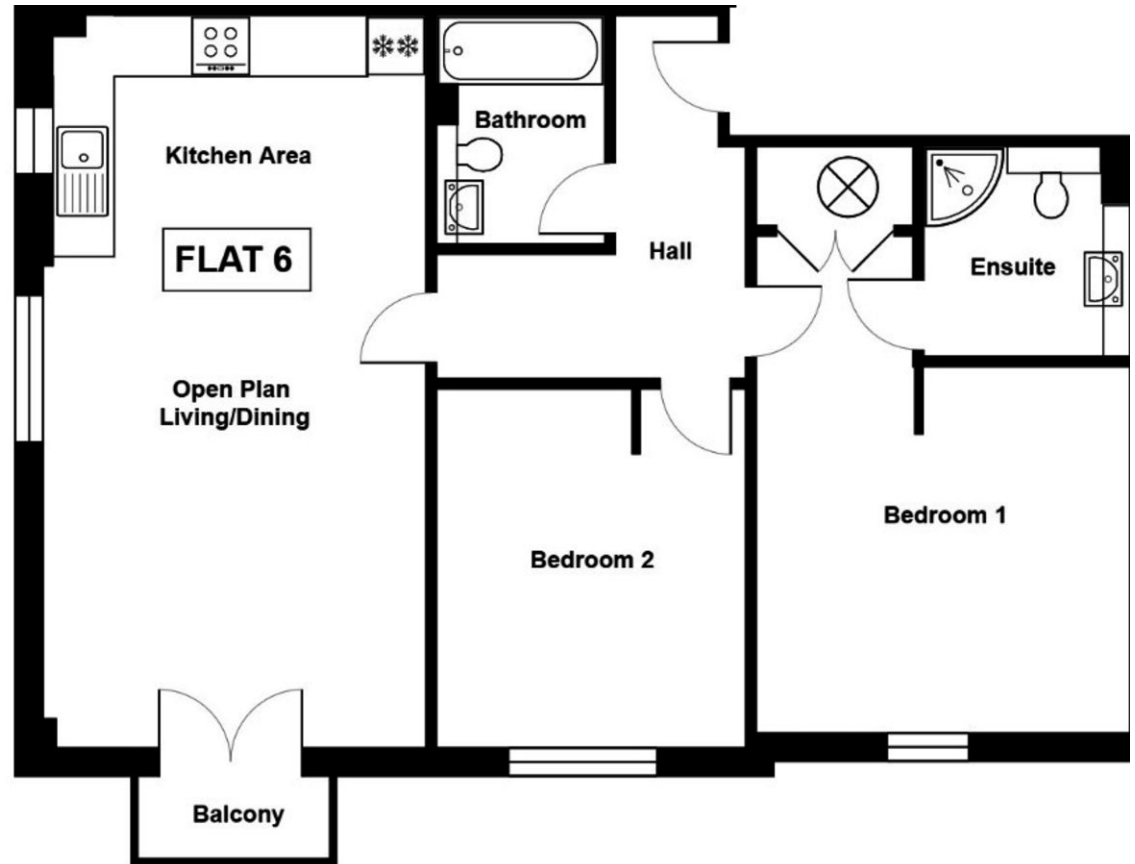
## Property Description

We are delighted to offer to the market this recently constructed two-bedroom, two-bathroom apartment located to the east side of High Wycombe. The apartment has been finished to a high standard and offers spacious and modern living. Further benefits from light and airy accommodation, a balcony, Bosch appliances, undercover parking with lift access to each floor.

The apartments are situated in a sought-after location to the east-side of High Wycombe which offers easy access to Junction 3 of the M40 motorway, High Wycombe town centre and Beaconsfield. The development is also just a short walk from Kingsmead Park. Available on a furnished basis from 10th July 2023

COUNCIL TAX C

EPC RATING B



Kingshills Estate Agents  
Comet Studios  
Amersham  
Buckinghamshire  
HP7 0PX

01494 939868  
hello@kingshills.co.uk  
kingshills.co.uk

Agents Note: Whilst every care has been taken to prepare these particulars, they are for guidance purposes only. All measurements are for general guidance purposes only and whilst every care has been taken to ensure accuracy, they should not be relied upon and potential buyers/tenants are advised to recheck the measurements