

The logo for 'source property' features a solid red square above the text 'source' in a bold, white, sans-serif font, with 'property' in a smaller, white, sans-serif font below it.

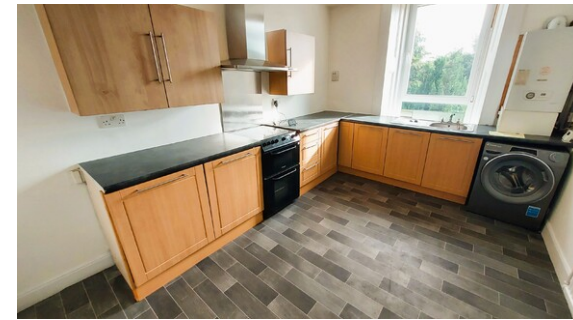
source
property

A photograph of a three-story red brick terraced building with a mansard roof and dormer windows. The ground floor has two white doors, one of which is open. The second and third floors have several windows. A red banner is overlaid at the bottom of the image.

2 Bedroom Apartment / Flat
Flat 167/2
Alexandria, G83 0DH

A photograph of a three-story red brick terraced building with a mansard roof and dormer windows. The ground floor has two white doors, one of which is open. The second and third floors have several windows. A red banner is overlaid at the bottom of the image.

Offers Over £79,995
www.sourceproperty.net



Flat 167/2, Alexandria, G83 0DH

Traditional Upper flat, Split over 2 levels and comprising; hallway, Lounge, Fitted kitchen, TWO DOUBLE Bedrooms both with storage and bathroom.

The recently decorated property must be viewed to appreciate the accommodation on offer. This outstanding property is further enhanced by a system of gas central heating, double glazed windows, plentiful storage, private garden grounds and on street parking. The property is convenient for local amenities with local shops and schooling within walking distance. The property is extremely well placed for access to public transport service, access to motorway links and short distance to Glasgow Airport.

EPC RATING - D

Council Tax Band - C

Living Room - 7.11m x 3.74m

Kitchen - 4.84m x 4.08m

Bathroom - 2.92m x 1.77m

Bedroom 1 - 3.17m x 3.10m

Bedroom 2 - 4.91m x 2.79m

Energy Efficiency Rating

	Current	Potential
<i>Very energy efficient - lower running costs</i>		
(92-100) A		
(81-91) B		
(69-80) C		78
(55-68) D	62	
(39-54) E		
(21-38) F		
(1-20) G		
<i>Not energy efficient - higher running costs</i>		

Environmental Impact (CO₂) Rating

	Current	Potential
<i>Very environmentally friendly - lower CO₂ emissions</i>		
(92-100) A		
(81-91) B		
(69-80) C		79
(55-68) D		
(39-54) E	55	
(21-38) F		
(1-20) G		
<i>Not environmentally friendly - higher CO₂ emissions</i>		