



- Two Bedroom First Floor Flat
- No Onward Chain
- Gas Central Heating
- UPVC Double Glazing

Fife Street, Mount Pleasant, Gateshead

First floor flat situated within this popular area of Gateshead. The property is warmed by gas central heating and has the benefit of UPVC double glazing. Close to Gateshead and Newcastle City Centre's with good transport links to the surrounding areas.

Offers In Region Of £69,950



Property Description

SEVEN KEYS welcomes to the market this to bedroom first floor flat situated within a popular area of Gateshead. The property is warmed by gas central heating and has the benefit of UPVC double glazing. The accommodation comprises of: Communal entrance. Living room, two double bedrooms, kitchen and shower room. Externally there are communal gardens and early viewing is recommended.

Fife Street delivers excellent links to Newcastle City Centre/Quayside, Gateshead and the Team Valley Shopping. With the A1 motorway, local schools and amenities available within Low Fell and the Old Durham Road. For directions: From the A167 Durham Road turn onto Split Crow Road, turning left onto Fife Street.

Request your viewing online today at SevenKeys.co.uk.

LIVING ROOM

UPVC double glazing to the front of the property, carpet and radiator.

KITCHEN

Modern fitted kitchen with a range of wall and base units, gas hob and integrated oven, plumbing for washing machine, stainless steel sink and drainer with mixer tap, vinyl flooring and radiator.

BEDROOM ONE

Generous double bedroom with double glazed windows, radiator and carpet.

BEDROOM TWO

Generous double bedroom with double glazed windows, radiator and carpet.

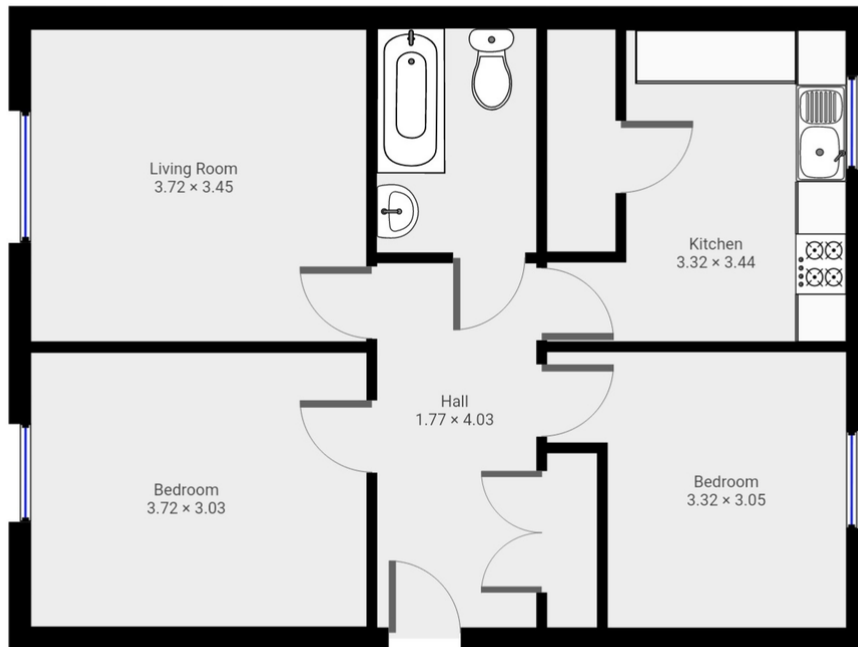
BATHROOM

Three piece white suite comprising of paneled bath with overhead





shower, pedestal wash basin, low level toilet, fully tiled walls and flooring.



Boston House, Unit 2 Fifth Avenue,
Team Valley Trading Estate,
Gateshead, Tyne And Wear, NE11
0HF

www.sevenkeys.co.uk
0191 4971797
info@sevenkeys.co.uk

Agents Note: Whilst every care has been taken to prepare these particulars, they are for guidance purposes only. All measurements are approximate are for general guidance purposes only and whilst every care has been taken to ensure their accuracy, they should not be relied upon and potential buyers/tenants are advised to recheck the measurements